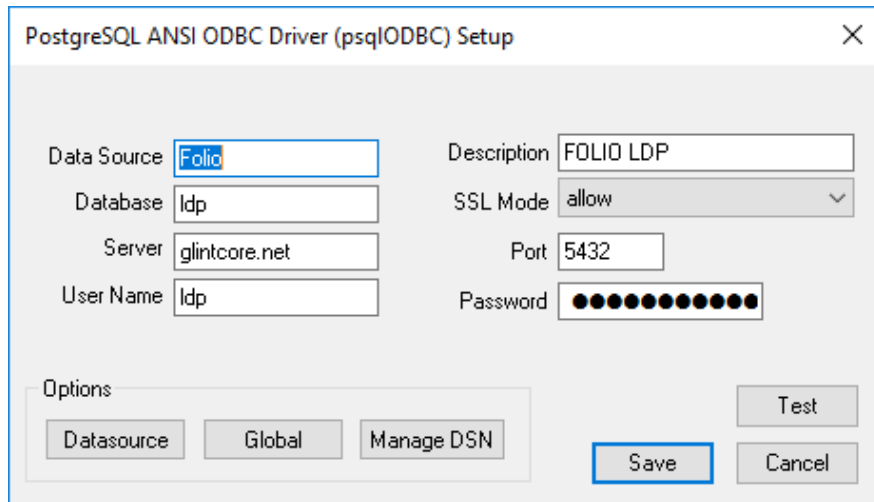
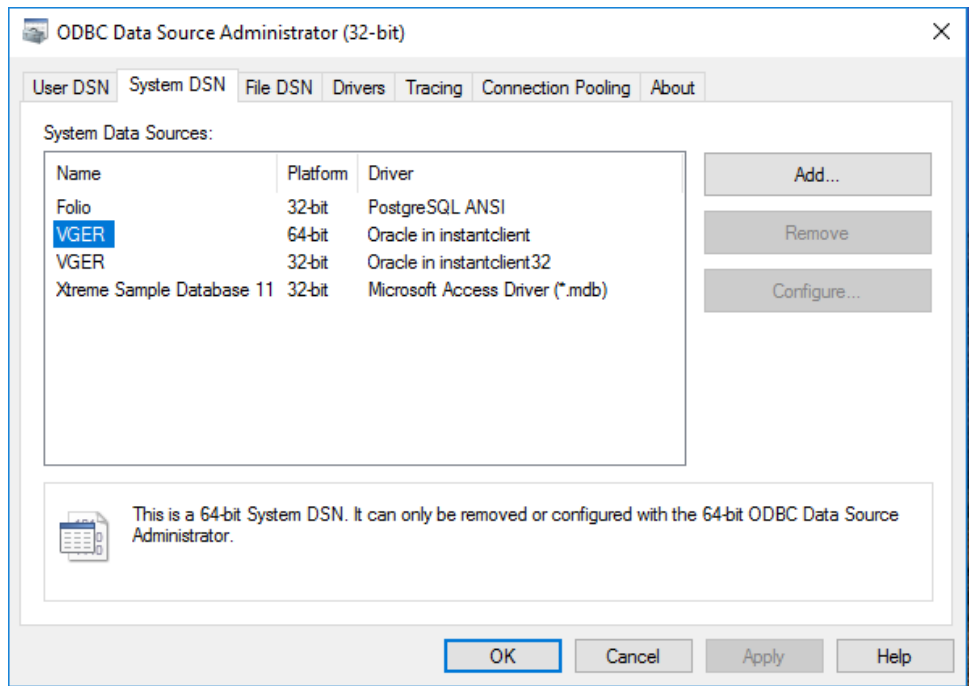


Crystal Reports

- Tested version 11 on a Dell OptiPlex 7040 running Windows 10 with 32GB of RAM.
- In the process of upgrading to the latest version and will update this document when new version is tested.

Setting PostgreSQL Drivers and Creating the ODBC Data Source (Windows 10)

- Download and install the latest PostgreSQL ODBC driver from <https://www.postgresql.org/ftp/odbc/versions/msi/>
 - We have a 32 bit version of Crystal Reports so we installed to 32 bit driver.
- Create your ODBC connection, data source, using the newly installed PostgreSQL driver.
 - On the ODBC Data Source Administrator window, choose the System DSN tab, then click Add.
 - Choose the driver you just installed from the list and click finish.
 - Enter your connection information into the appropriate fields and click save.



Connecting Crystal Reports to the Data Source

- Open Crystal Reports and choose Standard Report Wizard.
- On the next window, choose the data source name you previously set up and click Next.

New Reports

-  Standard Report Wizard
-  Blank Report
-  Cross-Tab Report Wizard
-  Mailing Label Report Wizard
-  OLAP Cube Report Wizard

ODBC (RDO) ✕

Data Source Selection
Choose a data source from the list or open a file dsn from the browse button

Select Data Source:

Data Source Name:
Excel Files
Folio
Folio-Unicode
MS Access Database
VGER
Xtreme Sample Database 11

Find File DSN:

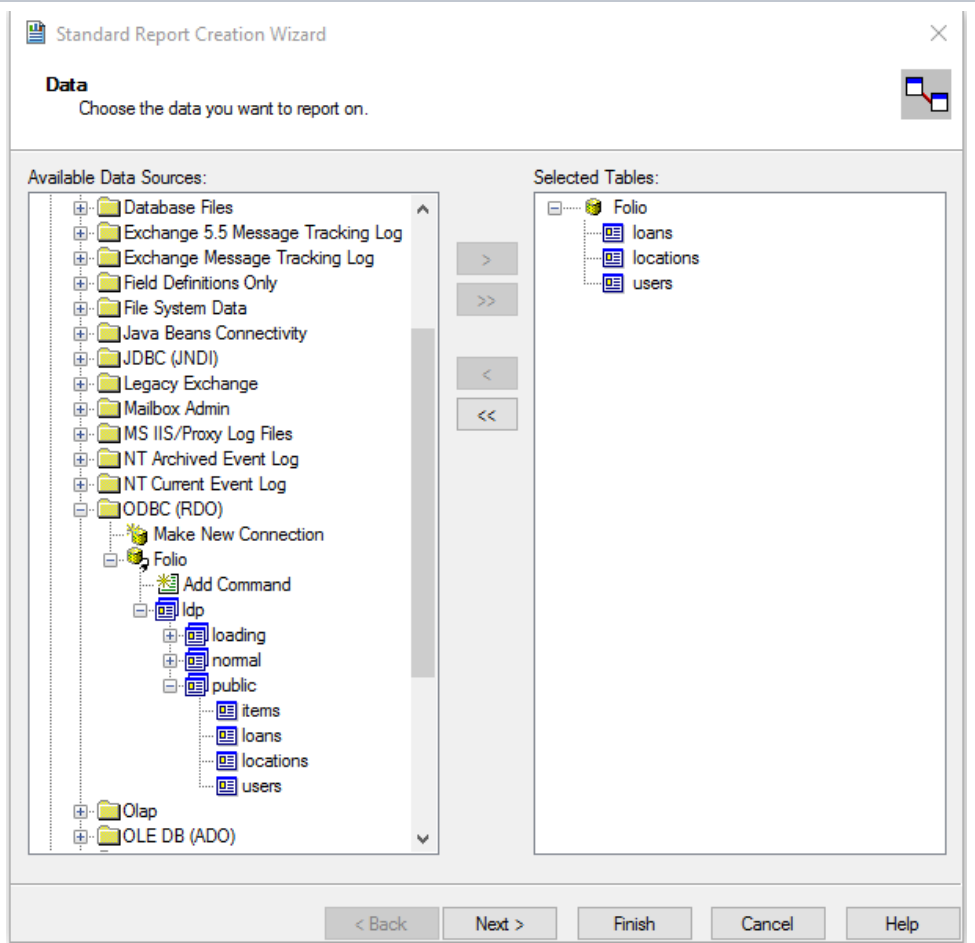
File DSN: ...

Enter Connection String:

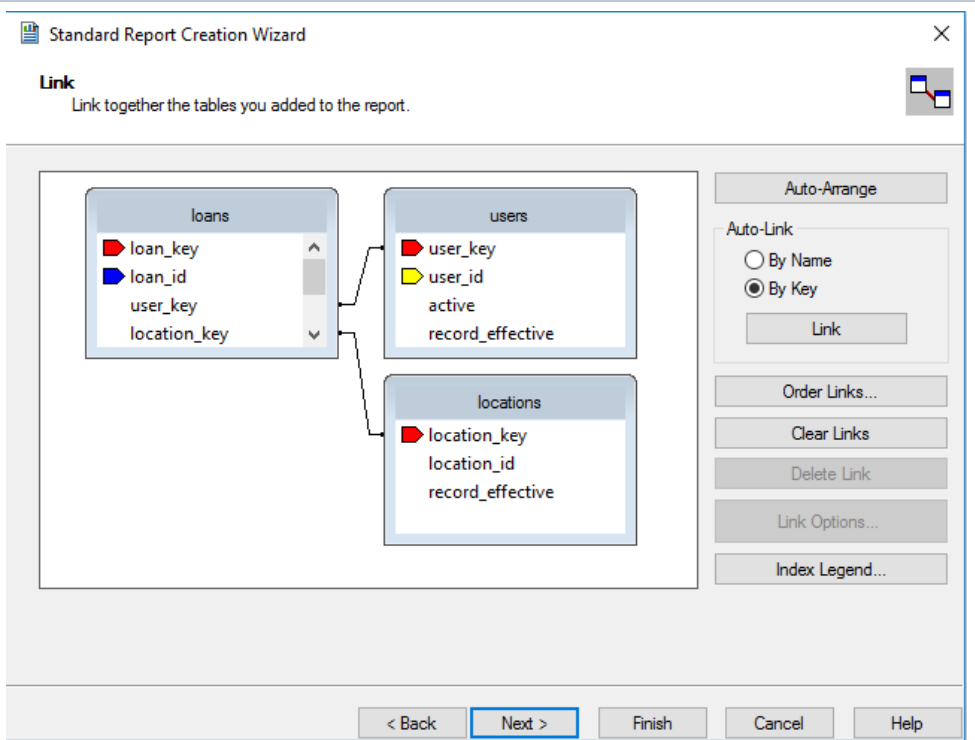
Connection String:

< Back **Next >** Finish Cancel Help

- Once you are connected, choose the tables you want to use and move them to the selected tables. Click Next.



- Make your table connections.



- Continue to click through, choosing your fields and criteria for the report.

Standard Report Creation Wizard

Fields
Choose the information to display on the report.

Available Fields:

- loans
 - loan_key
 - loan_id
 - user_key
 - location_key
 - item_key
 - action
 - status_name
 - loan_date
 - due_date
- locations
 - location_key
 - location_id
 - location_name
 - record effective

Fields to Display:

- loans.loan_key
- loans.loan_id
- locations.location_name

Buttons: < Back, Next >, Finish, Cancel, Help

- Your report will run automatically when you complete the wizard and click Finish.

2/28/2019

loan_key	loan_id	location_name
1	45DBA49A-2326-459D-82ED-D7CA1B76D3D0	Matthews Library
2	6E309DE2-AEA4-4DAC-8847-91BFD2C8F475	Becker Library
3	2FD7D28B-BCF7-463E-9AAB-6719AF51E376	Owens Library
4	6E1A10C5-733F-46DC-B49C-F4279C7C5A8	Wilson Library
5	0CBA3788-0026-47A2-A91F-7CBCDE9C0B6E	McDonald Library
6	5F13D0F9-EDC5-4C5C-A7C7-440B93261A46	Becker Library
7	5C88EA0A-9D12-4E9F-96D2-A79E53105B37	Gordon Library
8	53D1469A-96B9-48C1-845A-EF1A4F9FE9EB	Becker Library
9	391B5B0B-EBC0-4E40-B49B-7FE48629AE11	Smith Library
10	815A6492-F47D-4818-AB96-DC0DDC760056	Wilson Library
11	483B8561-2F93-43ED-B7AF-C207C587B548	McDonald Library
12	5C3122AE-EC08-4B42-84DB-3ED96A6C3C24	Matthews Library
13	A71943A9-7861-495E-9738-8EEC85ED6019	Wilson Library
14	2A35025E-7FB7-423D-A2D0-8E66F0593BD8	Collins Library
15	18424F2B-1C0C-4336-B209-E17C442DB120	Hamilton Library
16	E14C653F-07EF-4972-9F44-83E48C30C990	Andrews Library
17	8C29F97C-7A88-4325-9B95-D4D3225F3735	Andrews Library
18	CF196D3D-6553-4CAF-B443-C91CF A5B7DEE	Bailey Library
19	DA67C972-81C8-4E39-88BE-ACF5863AE437	McDonald Library
20	50F84A25-2326-4A34-B0B0-2451C704455F	Henderson Library